



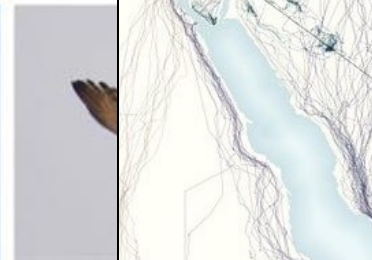
**GALALA
UNIVERSITY**

Powered by
Arizona State University



Carbon Neutral Campus





- Galala has a fortune of land and the sea that serve as natural carbon sinks, absorbing large amounts of greenhouse gas emissions. Conserving and restoring natural spaces, and the biodiversity they contain, is essential for limiting emissions and adapting to climate impacts.
- Galala is the second most important flyway in the world, with over 1.5 million soaring birds migrating between their breeding grounds in Eurasia and their wintering areas in Africa each year.



- The flora and fauna of the Galala are extraordinarily rich: fish of various shapes and colors live here, sea turtles and hedgehogs, amazing algae, an incredible beauty of a coral colony. The Galala's underwater eco-system is home to over 300 species of coral and 1,200 species of fish, 10% of which are found nowhere else in the world.
- The Red Sea has long represented a critical link in a network of global waterways stretching from the Mediterranean to the Indian Ocean to the Pacific

A C T R E S P O N S I B L E





**GALALA
UNIVERSITY**

Powered by
Arizona State University

جامعة الجلالة

Galala University is developing an integrated understanding of the various ecosystems of the Red Sea. Efforts are directed at gaining an understanding of the interplay between physical, chemical, biological, and geological factors as well as the stresses arising from natural and anthropogenic causes such as urbanization, coastal development, maritime transport, and global climate change. A main goal is to develop methods to sustain and conserve the environment along the coast of the Red Sea and on the top of its mountains.

A C T R E S P O N S I B L E

Carbon Neutral Stakeholders

The entire GU community involved in its sustainable activities, including students, academic and research departments, administrative staff, and facilities operators across campus.



Academics

Develop new sustainability courses and study programmes together with you.



Course Projects

Answer sustainability-related questions for The Office of Sustainability or other actors.



University management

Co-creates sustainability strategies and policies.



Student volunteers

Work in your The Office of Sustainability team on sustainability projects and events.



Facility Services

Collaborate on making buildings, catering and waste management more sustainable.



Student groups and representatives

Co-organise events or lobby for institutional changes with The Office of Sustainability.



A C T R E S P O N S I B L E

Galala University Carbon Neutral Strategic Plan

Foster Sustainable Resource Management

Develop and implement sustainable practices to decrease energy, water, and waste consumption across campus.

Improve Carbon Footprint Trends

Improve the accuracy of the carbon footprint data and maintain emissions reduction trends.

Enhance Social Responsibility

Increase the number of sustainability awareness raising events and campaigns on campus each year.

Expand Global Recognition

Increase participation in international forums and networks for universities committed to environmental sustainability.

A C T R E S P O N S I B L E

Galala University Carbon neutral Focus

1

2

3

4

Academics



Operations



Campus Community



Public Engagement



A C T R E S P O N S I B L E

GU Courses in Sustainability

Environmental Economics

Environmental management

Applied RS in Environment

Egyptian Natural Environment

Environmental Biology

Energy & Environment

Treatment of food plant waste

Environmental Studies

Environmental Design Studio

Environmental Geo-hazards

Environmental biotechnology

A C T R E S P O N S I B L E

UK – Egypt Higher Education Climate Change Partnerships

Project Title:

**Students as changemakers: Defining the remit of universities in fostering
climate resilient communities in the context of the climate crisis**

Partners:



Nottingham Trent
University

Funding:



A C T R E S P O N S I B L E

Carbon Research Highlights

HOW MANY PAPERS PUBLISHED ?

15 paper in last year

HOW MUCH FUNDING FOR SUSTAINABILITY RESEARCH ?

200000 US\$ last year

Research Themes



A C T R E S P O N S I B L E

Campus Operations Highlights

Galala University will sign soon an agreement with the NREA - New and Renewable Energy Authority to naturalize the carbon emissions from the campus and transportation

وزارة الكهرباء والطاقة المتجددة
هيئة الطاقة الجديدة والمتجددة



I AM CARBON NEUTRAL



A C T R E S P O N S I B L E

Campus Operations Highlights

How much reduction in energy use due to energy-efficient wall construction?

22%

How much reduction of carbon sequestered from landscaping and composting

2000 Carbon Tons

How much reduction in energy consumption?

25%

How many plastic bottles saved from campus filtered drinking water stations?

Around 5000 water bottle last year

How many of GUians use GU's bus service to commute to and from campus ?

80% of all GU students

How much campus irrigation uses treated wastewater?

90%

How much surveyed food vendors use local products?

5

Galala University Working Towards first **Green** Campus in Egypt



GU will initiate a project to earn its first Leadership in Energy and Environmental Design (LEED) for Operations and Management (O+M) certification.



CERTIFIED



A C T R E S P O N S I B L E

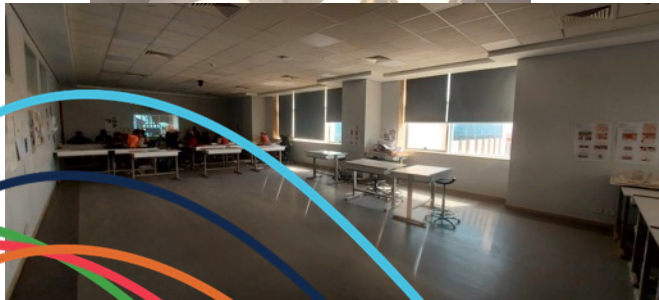


Energy

GU keeps meticulous data about how much energy is being used across campus.

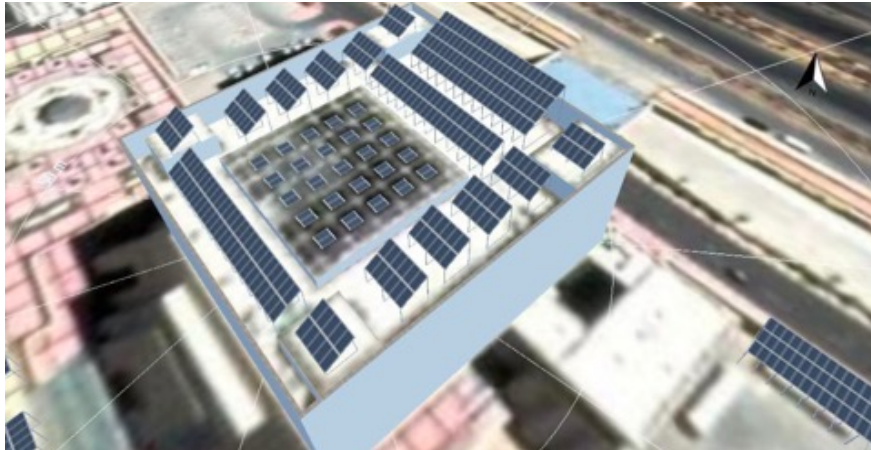
Galala University implement the following Energy Projects

- Every building on campus has double-glazed windows and double-skinned façade.
- All interior and outdoor lighting fixtures use LED lighting.
- Occupancy sensors are utilized to adjust the temperature settings across the campus.
- All areas receive enough natural light.
- For 70% of the academic year, all classrooms and meeting spaces benefit from natural ventilation.



A C T R E S P O N S I B L E

Solar Energy Project



Galala University solar plant produces over
500 megawatt

To save
15% from the electricity bill

Funding:



A C T R E S P O N S I B L E

Campus Operations Highlights

Galala University signed an agreement with the Arab Organization for Industrialization for

Total Waste Management
Electrical Golf Cars
Solar Panels



A C T R E S P O N S I B L E

International membership

In 2021, Galala University is a member in The United Nations Sustainable Development Solutions Network initiative (SDSN)



In 2021, Galala University had joined the Race to Zero Climate for Universities and Colleges Campaign ahead of the COP 26 summit.



International Collaboration



Turn it Around project
In collaboration with Arizona State University

Energy and Climate Innovations from students from the
U.S. and Egypt in collaboration with Texas A&M Energy
Institute



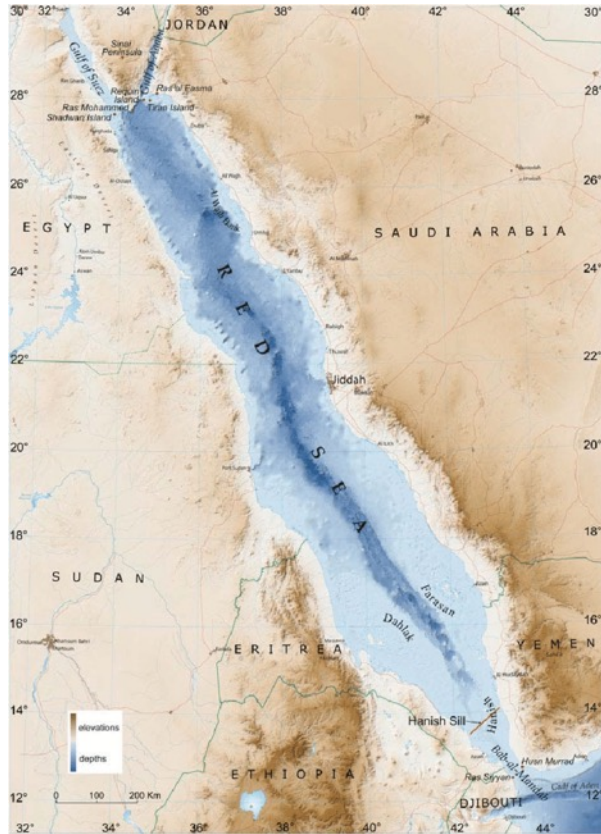
A C T R E S P O N S I B L E

Flood Hazard Assessment in Ain Sokhna

Galala University is conducting a Flood hazard assessments are critical to **identifying areas at risk** and taking relevant preparation and mitigation measures to address the hazard.



Biodiversity ATLAS



Galala University is working on building an ATLAS for the Galala region that includes the red sea ecosystem and the surrounding mountains.

Rescuing Griffon Vulture

Last year, A windfarm in Zafarana had spotted a grounded Griffon vulture (*Gyps fulvus*). A team from Galala University immediately sprang into action to help that Vulture. GU is coordinating with experts from the Galala Bird Observatory and BirdLife International to establish a permanent station to monitor and study migratory birds.



A C T R E S P O N S I B L E

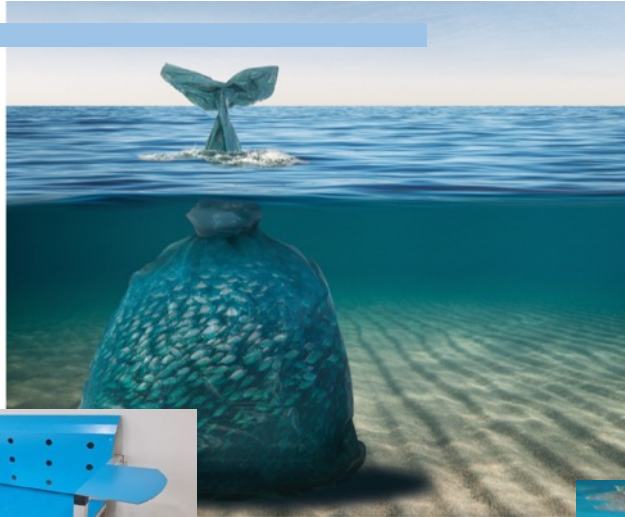
Children University in Galala University

Children under from 6 to 12 years old conduct many workshops related to Environment and sustainable development



A C T R E S P O N S I B L E

Students' Activities



IT'S ALL
FUN
AND
GAMES
UNTIL IT
AFFECTS YOU



Students' Activities



ONE KIND WORD
Engineering Family - Weekly Calendar
"International Anti-Bullying Week"
WEEK OF 15-19 NOVEMBER

ACTIVITY	WHAT TO DO
<p>S</p> 	<ul style="list-style-type: none"> Offer nice smile for everyone Say nice word to your mates, professor, everyone. "Ask if someone's OK. Say you're sorry. Just say hey" Shoot photos showing kindness
<p>M</p> 	<ul style="list-style-type: none"> Wear white (scarf, shirt, T-shirt, etc) Join us at HQ23 to enjoy candy and talks (1:00 to 2:00 PM) Group photo - 2:15 PM (Front Entrance)
<p>T</p> 	<ul style="list-style-type: none"> Wear odd socks that day Shoot photos and nice videos
<p>W</p> 	<ul style="list-style-type: none"> Upload your week activity and photos to IG teams, social media Share your experience with us Sustain kind words and smiles

CHANGE STARTS WITH US
Anti-Bullying Week
ONE KIND WORD



A C T R E S P O N S I B L E

INSTITUTIONAL CHANGE

Some examples of how office of environmental development embed sustainability within the university:

Advice on sustainable procurement

Biodiversity action plan

Carbon footprint of the university

Development of a sustainability strategy

Education for sustainability training

Fairtrade certification

Green roofs

Honours course

Inventory of sustainability courses

Journal of sustainability studies

Living lab

Mobility policy

New sustainability PhD

Organic meals in cafeteria

Proposal for new sustainability minor

Quality assessments of sustainability courses

Replacement of plastic cups

Student-led sustainability research

Tiny forest with 300 trees

Urban gardening on campus

Vegetarian catering

Water fountains

Your Project

A C T R E S P O N S I B L E



COMMUNITY ENGAGEMENT

Some examples of how office of sustainability engage students and staff on sustainability:

Awards for best sustainability idea

Bicycle repair workshop

Clothes swap event

Divestment day

Earth hour

Farmers' market

Green teachers award

Health Week

Insect hotels on campus

Joint board meetings of student groups

Lecture series on climate change

Meatless Monday

Networking event

Orientation week campaign

Plogging run to collect waste

Quiz night

Repair workshop

Second-hand book sale

Training for student groups

Use your own cup campaign

Veggie cooking evening

Week of sustainability

Your Project



A C T I V E R E S P O N S I B L E



**GALALA
UNIVERSITY**

Powered by
Arizona State University

T H A N K Y O U

A C T R E S P O N S I B L E

gu.edu.eg